



# PRODUCT RANGE

**DRESSTA CONSTRUCTION EQUIPMENT**











4–5

A Reliable Partner

6–7

S-Series Compact  
Crawler Dozers  
Hydrostatic Drive

8–9

R-Series Compact  
Crawler Dozers  
 Powershift Transmission

10

Mid-size  
Crawler Dozers  
 Powershift Transmission

11

Large  
Crawler Dozers  
 Powershift Transmission

12

Landfill Crawler Dozers

13

Pipelayers

14

Conveyor Belt Shifters

15

Keeping You  
On the Job 24/7

# A Reliable Partner

Headquartered in Poland, Dressta is today a global manufacturer of crawler dozers, pipelayers and a member of the LiuGong family.

At Dressta, our passion for heavy machinery is over 70 years old. This rich heritage and strong pedigree have allowed us to build know-how and manufacturing excellence through strategic partnerships along the way.

We are committed to delivering high quality, reliable and powerful machines coupled with full technical service & parts support whilst tailoring machines to individual customer needs, helping them achieve more in the jobs they do.

## OUR HOME AT THE HEART OF EUROPE



## GLOBAL REACH & DISTRIBUTION

Dressta is providing its customers with machines that they need to get any job done coupled with streamlined, efficient and responsive technical service organization with 7 commercial and aftermarket support hubs around the globe.



**Close to our dealers & customers we serve**

- ▶ 7 global centers & parts distribution centers
- ▶ 74 dealers in 60 countries





Dressta is redefining crawler dozer productivity and durability with its customer focused approach to design and manufacturing.

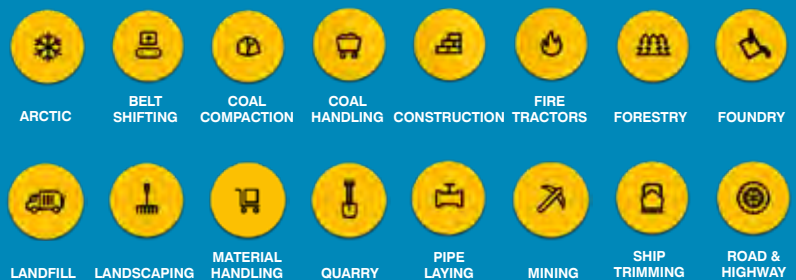
### ENGINEERED FOR YOUR BUSINESS

What makes us truly unique? With a dedicated team of application engineers, Dressta has the unique ability to customize designs, modify standard equipment to better perform in specific application tasks thus helping customers to improve productivity and bottom line results.

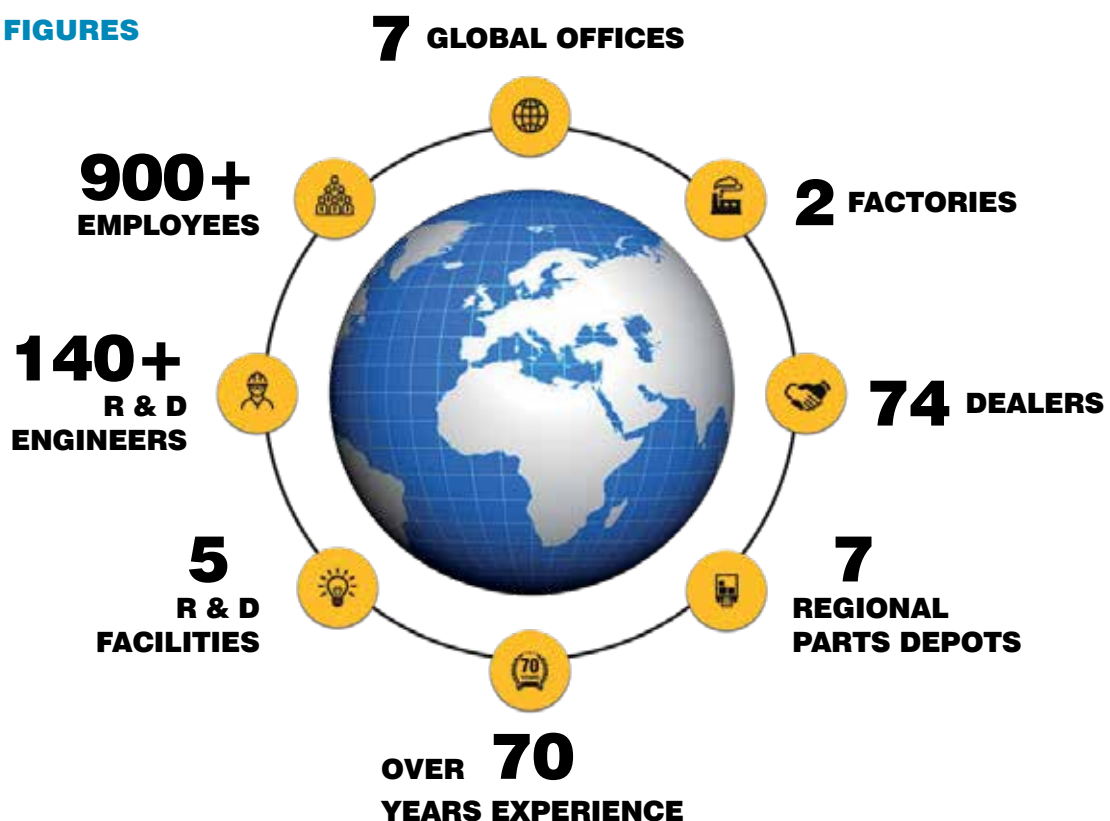
Every day, around the world, no matter the job or conditions clients rely on perfectly engineered Dressta machines.

### DRESSTA MACHINES PROVIDE EXCELLENT PERFORMANCE IN A VARIETY OF APPLICATIONS:

A global manufacturer of full line crawler dozers ranging from 78 to 536 hp and pipelayers with maximum lifting capacity of 100 tons, Dressta can configure your machine to provide excellent performance in a variety of applications.

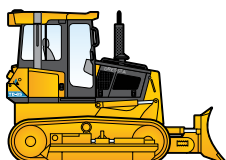


### DRESSTA IN FIGURES

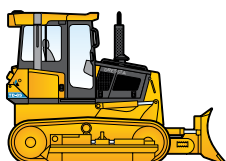


# S-Series Compact Crawler Dozers

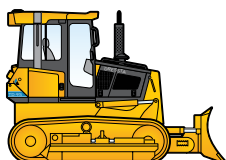
## Hydrostatic Drive



Net horsepower <b>S</b>	58 kW (78 hp)	EPA Tier 4f
Blade capacity	1.7 – 1.8 m <sup>3</sup> (2.03 – 2.15 yd <sup>3</sup> )	
Operating weight LT	9,500 kg (20,944 lb)	
Operating weight LGP	9,750 kg (21,495 lb)	



Net horsepower <b>S</b>	70 kW (94 hp)	EPA Tier 4f
Blade capacity	1.84 – 2.0 m <sup>3</sup> (2.4 – 2.6 yd <sup>3</sup> )	
Operating weight LT	10,000 kg (22,046 lb)	
Operating weight LGP	10,300 kg (22,707 lb)	



Net horsepower <b>S</b>	84 kW (113 hp)	EPA Tier 4f
Blade capacity	2.2 – 2.4 m <sup>3</sup> (2.9 – 3.1 yd <sup>3</sup> )	
Operating weight LT	11,000 kg (24,250 lb)	
Operating weight LGP	11,300 kg (24,912 lb)	

### COMPACT IN SIZE, BIG IN FEATURES

The new Dressta 'S Series' compact crawler dozers are equipped with hydrostatic drive systems that transmit full power to both tracks in all conditions to ensure smooth speed modulation, pivot turns and counter rotation. The result is improved manoeuvrability, optimized productivity and ease of operation, even when working on confined job sites. Full range of options are available for blades, winches, Trimble systems and forestry applications. S-Series dozers are engineered to optimize versatility, controllability and finish grade accuracy.

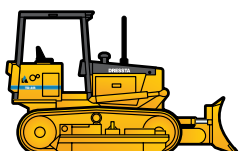




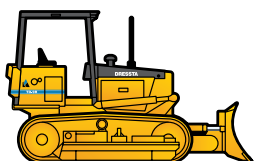


# R-Series Compact Crawler Dozers

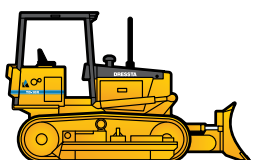
## Powershift Transmission



Net horsepower <b>R</b>	58 kw (78 hp)	EPA Tier 3/EU Stage IIIA
Blade capacity	1.45 – 1.68 m <sup>3</sup> (1.9 – 2.2 yd <sup>3</sup> )	
Operating weight STD	8,475 kg (18,684 lb)	
Operating weight LGP	8,811 kg (19,424 lb)	



Net horsepower <b>R</b>	69 kW (93 hp)	EPA Tier 3/EU Stage IIIA
Blade capacity	1.76 – 1.87 m <sup>3</sup> (2.3 – 2.4 yd <sup>3</sup> )	
Operating weight STD	9,410 kg (20,745 lb)	
Operating weight LGP	9,586 kg (21,133 lb)	



Net horsepower <b>R</b>	76 kW (102 hp)	EPA Tier 3/EU Stage IIIA
Blade capacity	2.15 – 2.21 m <sup>3</sup> (2.8 – 2.9 yd <sup>3</sup> )	
Operating weight STD	9,525 kg (21,000 lb)	
Operating weight LGP	9,638 kg (21,248 lb)	

### COMPACT DOZER, COLOSSAL POWER

Versatility across a range of applications requires a combination of speed, agility and brute force. Equipped with Powershift transmissions, R- Series Dozers are designed for maximum reliability and are proven performers in road & highway construction, landscaping, residential construction and forestry applications.

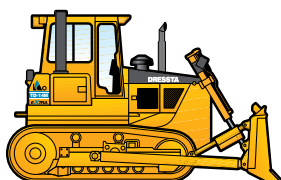




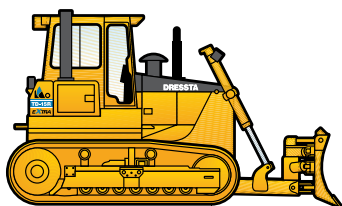


# Mid-size Crawler Dozers

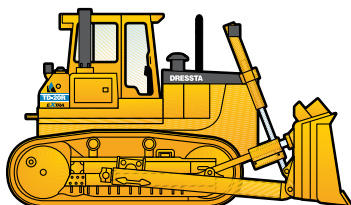
## Powershift Transmission



Net horsepower	<b>R</b> <b>M Extra</b>	119 kW (160 hp) 120 kW (160 hp)	EPA Tier 4i/EU Stage IIIB EPA Tier 3/EU Stage IIIA
Blade capacity		3.05 – 4.28 m <sup>3</sup> (4.0 – 5.6 yd <sup>3</sup> )	
Operating weight STD		16,100 – 16,570 kg (35,494 – 36,530 lb)	
Operating weight LT		17,100 – 17,570 kg (37,699 – 38,735 lb)	
Operating weight LGP		18,200 – 18,720 kg (40,124 – 41,270 lb)	



Net horsepower	<b>R Extra</b> <b>R</b> <b>M Extra</b>	154 kW (205 hp) 150 kW (201 hp) 142 kW (190 hp)	EPA Tier 4f/EU Stage IV EPA Tier 4i/EU Stage IIIB EPA Tier 3/EU Stage IIIA
Blade capacity		3.6 – 5.95 m <sup>3</sup> (4.7 – 7.8 yd <sup>3</sup> )	
Operating weight STD		20,660 – 20,760 kg (45,547 – 45,768 lb)	
Operating weight LT		20,810 – 20,910 kg (45,878 – 46,099 lb)	
Operating weight WT		21,105 – 21,315 kg (46,529 – 46,991 lb)	
Operating weight LGP		21,410 – 21,620 kg (47,201 – 47,663 lb)	



Net horsepower	<b>R Extra</b> <b>R</b> <b>M Extra</b>	185 kW (248 hp) 185 kW (248 hp) 179 kW (240 hp)	EPA Tier 4f/EU Stage IV EPA Tier 4i/EU Stage IIIB EPA Tier 3/EU Stage IIIA
Blade capacity		3.88 – 8.45 m <sup>3</sup> (5.1 – 11.1 yd <sup>3</sup> )	
Operating weight STD		23,990 – 24,250 kg (52,890 – 54,462 lb)	
Operating weight LT		24,550 – 24,810 kg (54,125 – 54,686 lb)	
Operating weight LGP		25,020 – 25,280 kg (55,159 – 55,732 lb)	

### ENGINEERED FOR COMMAND & CONTROL

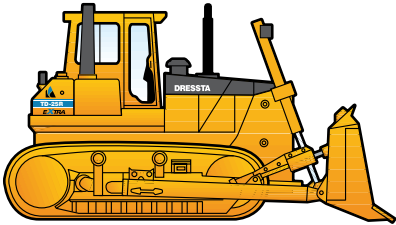
Dressta's mid-sized dozers have both the muscle and finesse to get the job done quickly and efficiently. Operator comfort, ease of serviceability and productivity are at the heart of their design, while their outstanding power and exceptional agility & precision deliver the right performance at any job site. Design concepts utilised in the mid-size dozers include optimisation of weight distribution, modular construction, use of a one-piece main frame and two-speed Steering Drive. Dressta also offers Trimble grade control systems, so you can stay in full command and make the grade with precise control and better finish.



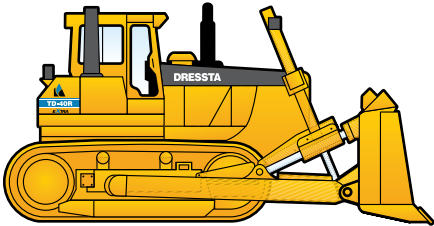


# Large Crawler Dozers

## Powershift Transmission



Net horsepower	<b>R Extra</b>	246 kW (330 hp)	EPA Tier 4f/EU Stage IV
	<b>R</b>	246 kW (330 hp)	EPA Tier 4i/EU Stage IIIB
	<b>M Extra</b>	246 kW (330 hp)	EPA Tier 3/EU Stage IIIA
Blade capacity		5.7 – 21.0 m <sup>3</sup> (7.4 – 27.5 yd <sup>3</sup> )	
Operating weight		41,150 – 41,500 kg (90,720 – 91,491 lb)	



Net horsepower	<b>R Extra</b>	394 kW (536 hp)	EPA Tier 4f/EU Stage IV
	<b>E Extra</b>	384 kW (515 hp)	EPA Tier 3/EU Stage IIIA
	<b>E XP</b>	388 kW (520 hp)	EPA Tier 2/EU Stage II
Blade capacity		18.6 – 39.8 m <sup>3</sup> (22.2 – 52.0 yd <sup>3</sup> )	
Operating weight		67,700 kg (149,251 lb)	



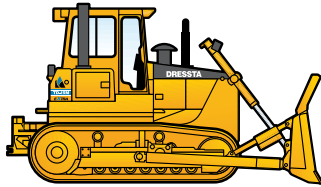
### BUILT TO EXCEL IN HEAVY DUTY APPLICATIONS

Dressta's large dozers are built to excel in heavy duty mining, coal and construction projects, incorporating advanced technologies and components for maximum performance. Dressta knows that productivity and reliability are key drivers for successful projects and that they rely on powerful equipment that works hard, shift after shift, with minimum downtime and maximum efficiency. That's why Dressta dozers have earned a reputation as proven performers in the everyday tasks to extreme duty dozing and ripping jobs.

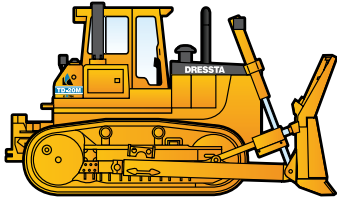




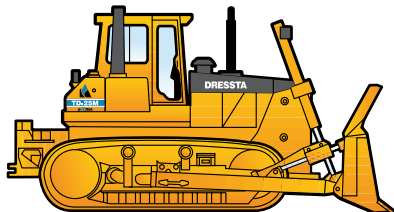
# Landfill Dozers



Net horsepower	<b>R Extra</b>	154 kW (205 hp)	EPA Tier 4f/EU Stage IV
	<b>R</b>	150 kW (201 hp)	EPA Tier 4i/EU Stage IIIB
	<b>M Extra</b>	142 kW (190 hp)	EPA Tier 3/EU Stage IIIA
Blade capacity		11.42 m <sup>3</sup> (14.9 yd <sup>3</sup> )	
Operating weight		21,440 kg (47,267 lb)	



Net horsepower	<b>R Extra</b>	185 kW (248 hp)	EPA Tier 4f/EU Stage IV
	<b>R</b>	185 kW (248 hp)	EPA Tier 4i/EU Stage IIIB
	<b>M Extra</b>	179 kW (240 hp)	EPA Tier 3/EU Stage IIIA
Blade capacity		13.0 – 17.15 m <sup>3</sup> (17.0 – 22.4 yd <sup>3</sup> )	
Operating weight STD		27,210 – 27,260 kg (52,987 – 60,098 lb)	
Operating weight LT		27,770 – 27,820 kg (61,222 – 61,333 lb)	
Operating weight LGP		28,240 – 28,290 kg (62,258 – 62,369 lb)	



Net horsepower	<b>R Extra</b>	246 kW (330 hp)	EPA Tier 4f/EU Stage IV
	<b>R</b>	246 kW (330 hp)	EPA Tier 4i/EU Stage IIIB
	<b>M Extra</b>	246 kW (330 hp)	EPA Tier 3/EU Stage IIIA
Blade capacity		20.6 – 25.5 m <sup>3</sup> (26.9 – 33.4 yd <sup>3</sup> )	
Operating weight		42,010 – 42,670 kg (92,616 – 95,070 lb)	

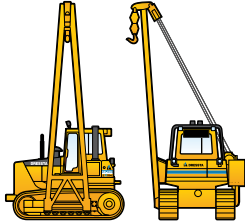
## ENGINEERED FOR LANDFILL

Dressta crawler dozers are designed to move more material with less passes and are built tough to withstand abrasive materials, as well as to protect your equipment and your people. No task is too big when a Dressta landfill dozer is in the fleet: easily prepare landfill sites, build access roads and compact refuse and spread the daily cover. From self-cleaning shoes to trash rack blades and reversible fans, Dressta dozers are fully equipped for the toughest of the landfill applications.

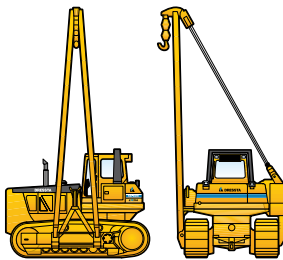




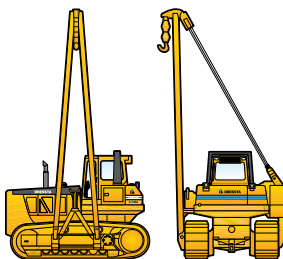
# Pipelayers



Net horsepower	<b>M Extra</b>	140 kW (188 hp)	EPA Tier 3/EU Stage IIIA
Lifting capacity		33,100 kg (72,972 lb)	
Operating weight		27,580 kg (60,803 lb)	



Net horsepower	<b>R Extra</b> <b>M Extra</b>	240 kW (322 hp) 231 kW (310 hp)	EPA Tier 4f/EU Stage IV EPA Tier 3/EU Stage IIIA
Lifting capacity		72,000 kg (158,731 lb)	
Operating weight		50,935 kg (112,293 lb)	



Net horsepower	<b>R Extra</b> <b>M Extra</b>	280 kW (376 hp) 276 kW (370 hp)	EPA Tier 4f/EU Stage IV EPA Tier 3/EU Stage IIIA
Lifting capacity		100,000 kg (220,460 lb)	
Operating weight		64,480 kg (142,153 lb)	



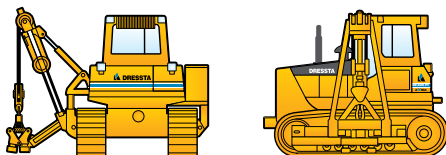
## SUPERIOR STABILITY

Dressta pipelayers employ hydraulically controlled counterweights which swing horizontally, ensuring maximum machine stability and improved visibility for the operator. Both the standard and optional booms are built to be used in all weather, and the most challenging environments. Rugged and durable, they are built with fully welded box-sections, and made from the highest quality steel.





# Conveyor Belt Shifters



Net horsepower	<b>M Extra</b>	276 kW (370 hp)	EPA Tier 3/EU Stage IIIA
Lifting capacity		15,300 kg (33,730 lb)	
Operating weight		50,400 kg (11,112 lb)	

## MINING EFFICIENCY

Open surface mines utilise conveyor belts to transport minerals or overburden from the seam to reprocessing areas. Repositioning of conveyor belts is a time-consuming operation, but the Dressta SB-60PT is specifically engineered to perform rapid repositioning and realignment of conveyor belts – a common requirement in open pit mines. When hundreds of meters of conveyor belt need to be repositioned, powerful and reliable heavy equipment is crucial for the efficiency of the mining operation.





# Keeping You On the Job 24/7

Dressta knows that its equipment is put to the test each and every day and its machines are engineered to stand up to the challenges and demands of the toughest jobs.

## **WARRANTY**

When you purchase a Dressta product, your investment is backed by one of the most comprehensive warranties in the industry. In addition to the standard 12 month warranty, Dressta offers extended warranty protection programs for additional peace of mind.

## **EASY PARTS SUPPLY**

Genuine Dressta parts are engineered to fit right the first time and to provide the highest levels of performance and reliability while meeting strict quality controls. The global parts network, with seven regional distribution centers and advanced logistics systems, means you can be assured of rapid parts supply of whatever you need, wherever you are.

## **GET THE MOST OUT OF YOUR EQUIPMENT**

Dressta's stringent quality assurance ensures all products meet the exact needs of customers. Technical support teams offer fast access to factory expertise and information systems while ongoing aftersales support is available via dealerships with factory trained engineers who are available as and when you require.



With products supplied worldwide through a well-established network of independent distributors, Dressta is as passionate about the industry as you are.



Specifications may change from time to time and this brochure may not reflect the latest specifications. Photographs in this brochure may not reflect market configuration. Please consult your dealer to confirm specifications and configurations.



Dressta encourages safe worksites.

Please consult operator's manual before use of any Dressta equipment.



---

[info@dressta.com](mailto:info@dressta.com)  
[www.dressta.com](http://www.dressta.com)

DR-PB-RANGE-A4-19022019-ENG

